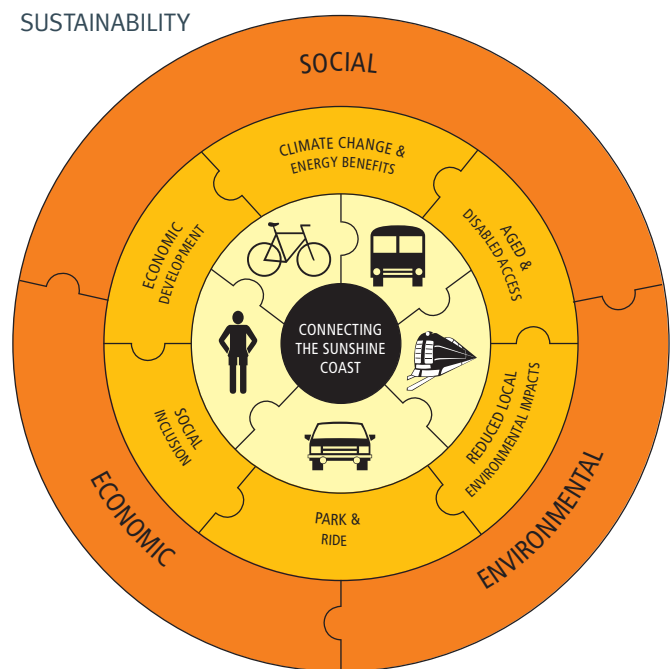


Sustainability

Sustainability is about achieving economic development in a way that benefits society and the natural environment – both now and in the future. The MMTC will contribute to sustainability by:

- planning and designing for an integrated transport network that supports active and sustainable transport modes such as cycling, walking, buses and rail, as well as cars and trucks
- providing better connectivity between key destinations and transport nodes along the coast, including commercial, residential, educational, health and sporting facilities
- providing seniors and people with disabilities with more transport options and greater accessibility
- enhancing safety for travellers, including cyclists, pedestrians, and people dependent on personal mobility devices
- minimising resource and energy use in construction including the use of recycled materials where possible
- minimising local environmental impacts
- designing the facility to address climate change.



Embedding sustainability in design

The MMTC will influence transport patterns on the Sunshine Coast for generations. Main Roads is planning the project to achieve sustainable outcomes. Sustainability will be central to the design and construction process, not just an 'add on' at the end.

Sustainability specialists have been appointed to the project team. They are working with designers and engineers to help them consider the sustainability implications of design decisions.